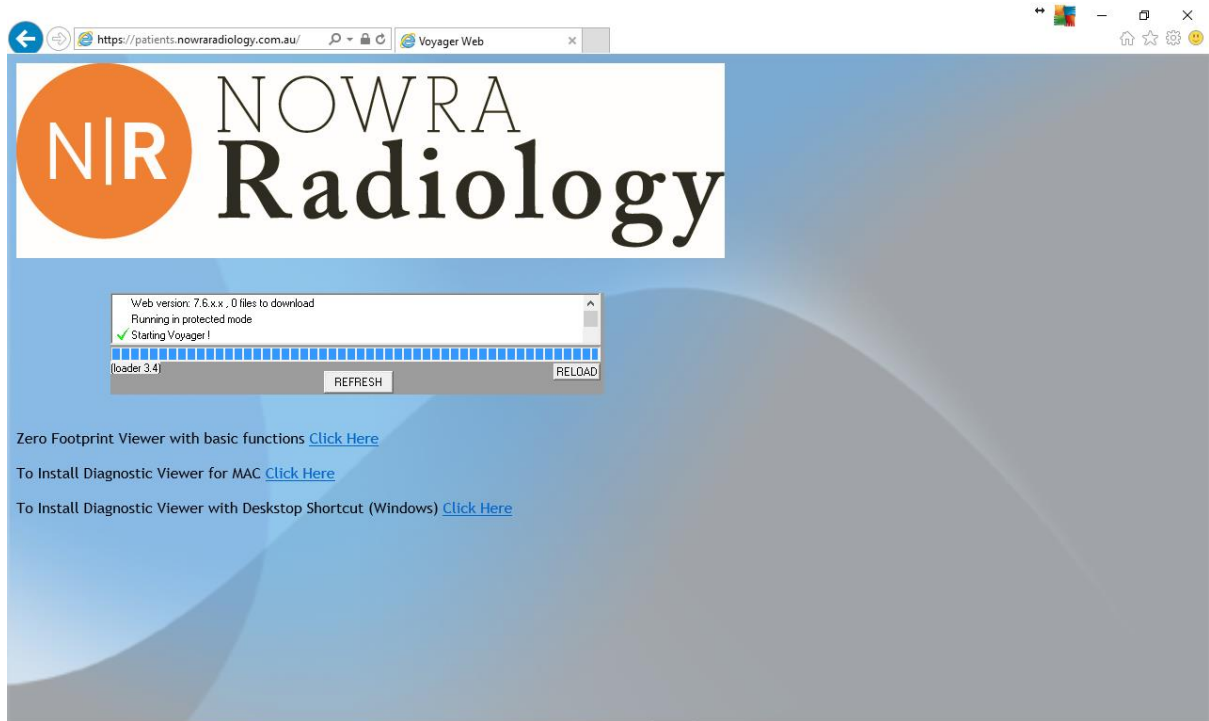


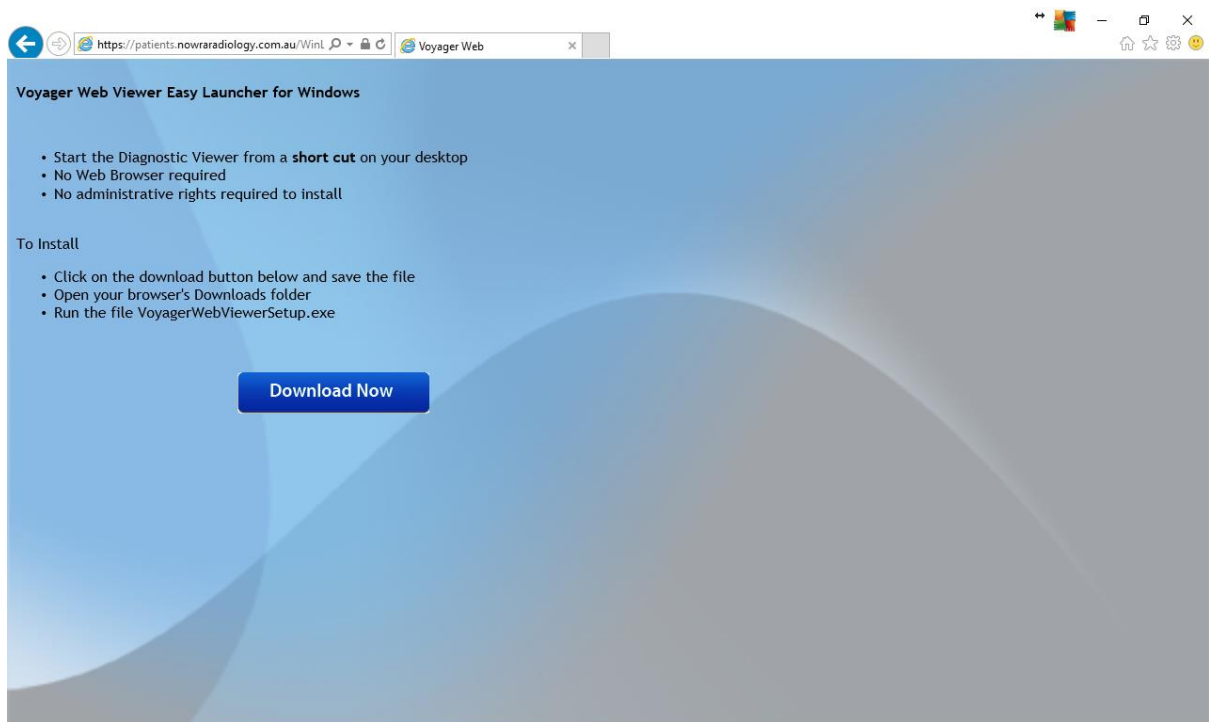
Instructions to install Voyager PACS Web Viewer using an Installer

1 – Open a web browser and go to <https://patients.nowraradiology.com.au> .

Select ‘To Install Diagnostic Viewer with Desktop Shortcut (Windows)’ (See image below).

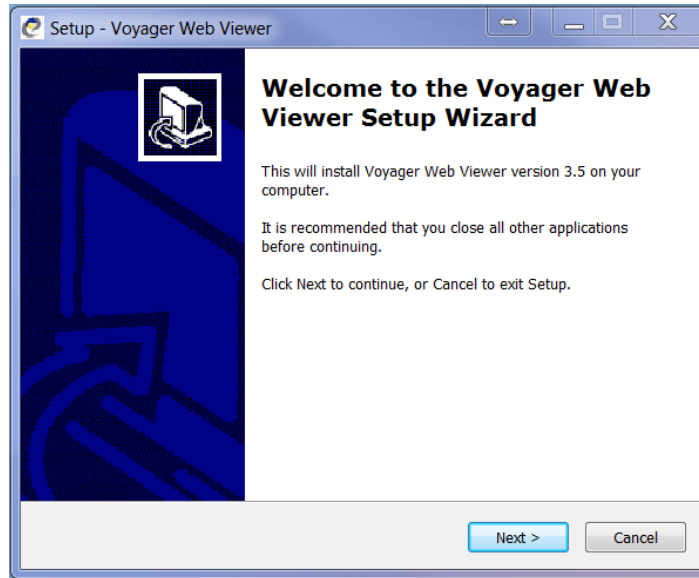


2 –Click on ‘Download Now’ to download the VoyagerWebViewerSetup.exe .

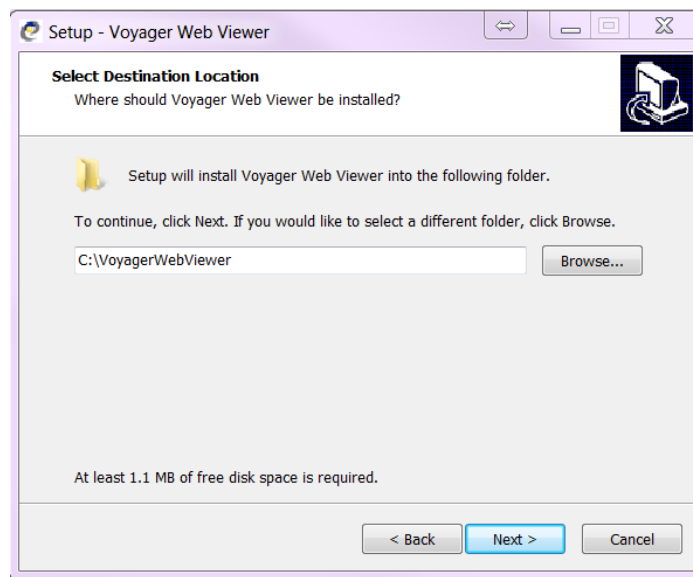


3 – Once the installer is downloaded, run it. (If you get a prompt ‘the publisher of VoyagerWebViewerSetup.exe couldn’t be verified’, then click ‘Run’)

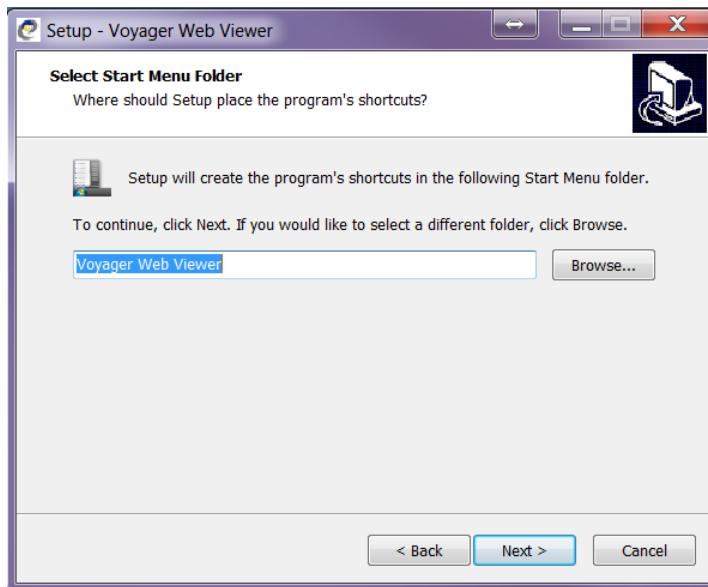
4 – Voyager Web Viewer Setup Wizard will open up and click **'Next'**.



5 – Under **'Select Destination Location'**, a default path will be displayed. Click **'Next'** (If you would like to install at a different location, then please **'Browse'** and select).



6 – Under **'Select Destination Location'**, a default Start Menu Folder will be displayed. Click **'Next'** (If you would like to select a different folder, then please **'Browse'** and select).



7 – Under **'Select Additional Tasks'**, check the box **'Create a desktop icon'** and click **'Next'**.

8 – On the next view click on **'Install'**.

9 – Once the installation is complete, click **'Finish'**.

10 – Go to Desktop and double click on Voyager Web Viewer icon . This will start Voyager Web Client Loader.

11 – Enter Server name as – <https://patients.nowraradiology.com.au> and click on 'Launch Web3'. Files will be downloaded from your server automatically and will launch Voyager PACS Web Viewer.

11 – Enter username and password to log onto Voyager PACS Web Viewer.

--END--